



52

JHARKHAND RAKSHA SHAKTI UNIVERSITY

(Established by State Government and recognized by UGC)
Meurs Road (SKIPA Premises), Ranchi 834008

Department of Criminology

Merit List-IV

The following candidates are provisionally selected for Admission in M.A/M. Sc Criminology for the academic session 2024-2026 at Jharkhand Raksha Shakti University Campus, Ranchi.

Category: Open

S.No.	Form Number	Name of the Student	Father Name	Remarks
1	20240378911	ANJALI KUMARI	RAVI RANJAN KUMAR	
2	20240385549	ROHIT BHAI PATEL	RABINDRA PRASAD	
3	20240398051	KHALID WAQUAR ABID	ABID HUSAIN	
4	20240392923	MITHUN KUMAR	BIGA MUNDA	
5	20240405331	SOURABH RAJ	SUNIL KUMAR	

Note: The provisionally selected candidates have to make the payment of admission fees (Rs. 6200/-) and First Year tuition fees (Rs. 22,000/-) in the chancellor portal through their login credentials only. For Payment, the candidates are requested to follow steps given in the subsequent pages. Students have to submit the following documents on or before 27th July 2024 at 5.00 PM at the university campus, Ranchi for confirmation of their admission.

1. Admission payment slip of Chancellor Portal
2. School or college leaving certificate (original)
3. Migration certificate (original)
4. Character Certificate (original)
5. Two passport size photographs

For any queries contact: Mr. Vikash Agarwal (9835911613)


Course Coordinator 03/09/2024


Admission In-charge 03/09/24


Registrar 03.09.2024

Steps for Payment of Admission fees in the Chancellor Portal

Step 1: Students have to first login to their account

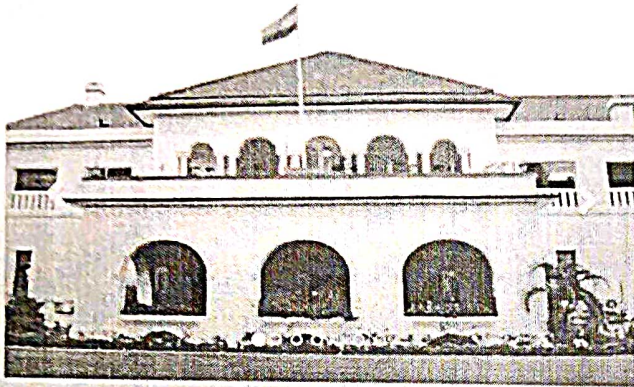


JHARKHAND RAKSHA SHAKTI UNIVERSITY

(Established by State Government and recognized by UGC)
Meurs Road (SKIPA Premises), Ranchi 834008



- Home
- University
- Student Sign Up
- Notifications
- Contact Us
- Recruitments
- JSCU
- Help



Announcements

For online admission in UG & PG for all state university. Please click NEWS & UPDATE Section

For News And Updates Click Here

For admission enquiry, you can contact University College no. mentioned in the official grid between 10 AM to 8 PM

To know your admission/application form fill-up process, follow/subscribe us on our social media link

Login Section (For STUDENTS only)

Username

Password

Remember Me

Log In Here

Don't have an account? Sign Up

Forgot Password OR Username?

Step 2: Click on the payment option, given on the left side of window

The screenshot shows the Chancellor Portal interface. On the left is a navigation menu with the following items: Dashboard, Admission Form, View Applications, Payment, Transfer Request, Change Request, Selfings, F.A.Q, and Logout. The main content area displays 'Payment Details' with two options: 'Pay Fee' and 'Payment History'. A note above these options says: 'Click on "Pay Fee" for fee payment and "Payment history" to see payment y...'

Step 3: Click on the Pay Fee option in payment details section, and select admission



JHARKHAND RAKSHA SHAKTI UNIVERSITY

(Established by State Government and recognized by UGC)
Meurs Road (SKIPA Premises), Ranchi 834008

Chancellor Portal

MAIN NAVIGATION

- Dashboard
- Admission Form
- View Applications
- Payment
- Transfer Request
- Change Request
- Settings
- FAQ
- Logout

Payment Details - Click on "Pay Fee" for fee payment and "Payment history" to see payment you made for an appli

Pay Fee Payment History

Module Name

APPLICATION

APPLICATION

ADMISSION

READMISSION

MISCELLANEOUS

MIGRATION

MODULE NAME as ADMISSION and Click on GET DETAILS.
Once you CLICK on the PROCEED button for Admission, you cannot pay as payment option has been closed by University. Please contact your college as a student has already initiated payment for one discipline. So g

Chancellor Portal

MAIN NAVIGATION

- Dashboard
- Admission Form
- View Applications
- Payment
- Transfer Request
- Change Request
- Settings
- FAQ
- Logout

Payment Details - Click on "Pay Fee" for fee payment and "Payment history" to see payment you made for an applications.

Pay Fee Payment History

Module Name

ADMISSION

NOTE:

- To make Admission Fee Payment, Please select the MODULE NAME as ADMISSION and Click on GET DETAILS
- Please make sure before you proceed for PAYMENT. Once you CLICK on the PROCEED button for Admission, you cannot PAY again for any another discipline or College.
- If Payment status is "PAYMENT CLOSED". This means payment option has been closed by University, Please contact your University / College for more information.
- If Payment status is "ALREADY INITIATED". This means a student has already initiated payment for one discipline. So get yourself DOUBLE SURE before making ADMISSION FEE PAYMENT.

Get Details Reset



JHARKHAND RAKSHA SHAKTI UNIVERSITY

(Established by State Government and recognized by UGC)
Meurs Road (SKIPA Premises), Ranchi 834008

Step 3 : In bottom, the candidate can see the option of *Pay Now* for the course in which he/she got selected.

ADMISSION

NOTE :-

- To make Admission Fee Payment, Please select the MODULE NAME as ADMISSION and Click on GET DETAILS
- Please make sure before you proceed for PAYMENT. Once you CLICK on the PROCEED button for Admission, you cannot PAY again for any another discipline or, College
- If Payment status is "PAYMENT CLOSED". This means payment option has been closed by University. Please contact your University / College for more information.
- If Payment status is "ALREADY INITIATED". This means a student has already initiated payment for one discipline. So get yourself DOUBLE SURE before initiating ADMISSION FEE PAYMENT.

S#	Form No / University / College Name	Course Name	Applied Date	Payment Status
1	Form No - 20230031475 BINOD BHARI MAHTO KOYALANCHAL UNIVERSITY DHANBAD KATRAS COLLEGE, KATRASGARH, DHANBAD	UG-R/- HUMAN ENGLISH Semester - 1	20-07-2023 10:59:32	Pay Now

Step 3 : A confirmation message will come for the final approval of payment. After receiving the confirmation message, the candidate will get the option to pay using either credit card/Debit card/ Internet banking or UPI.

ADMISSION Payment Details

NOTE :-

- Do not repeat the payment if any amount has been deducted or debited from your bank account.
- Click on **GET DETAILS** button in your **payment history** section or contact to **Chancellor Portal Helpdesk** if amount has been deducted and status still showing failed.
- To know more information regarding payment related queries, Please click here.

Are you sure want to proceed for payment ?

Total Fee Amount : ₹ 1783/-

S#	Payment Gateway
1	ICICI Bank

GET DETAILS :-
(Admission, you cannot PAY again for any any. Please contact your University / or one discipline. So get yourself DOUBLE